

KID'S MENU



PEEPLER

One mini pancake, one egg prepared your way and a choice of two pieces of bacon or one sausage link. 7.99



JR. CHIP

A pancake chock full of sweet chocolate chips and topped with powdered sugar and whipped cream. 6.99



GRANNY'S FRENCH TOAST

Two slices of our custard dipped French Toast sprinkled with powdered sugar and served with whipped butter. 6.99



FUNNY FACE Pancake

Every kid's favorite! A happy face pancake topped with fruit and whipped cream. 6.99

GRILLED CHEESE

Grilled cheese sandwich on Texas toast. Served with fries. 6.99

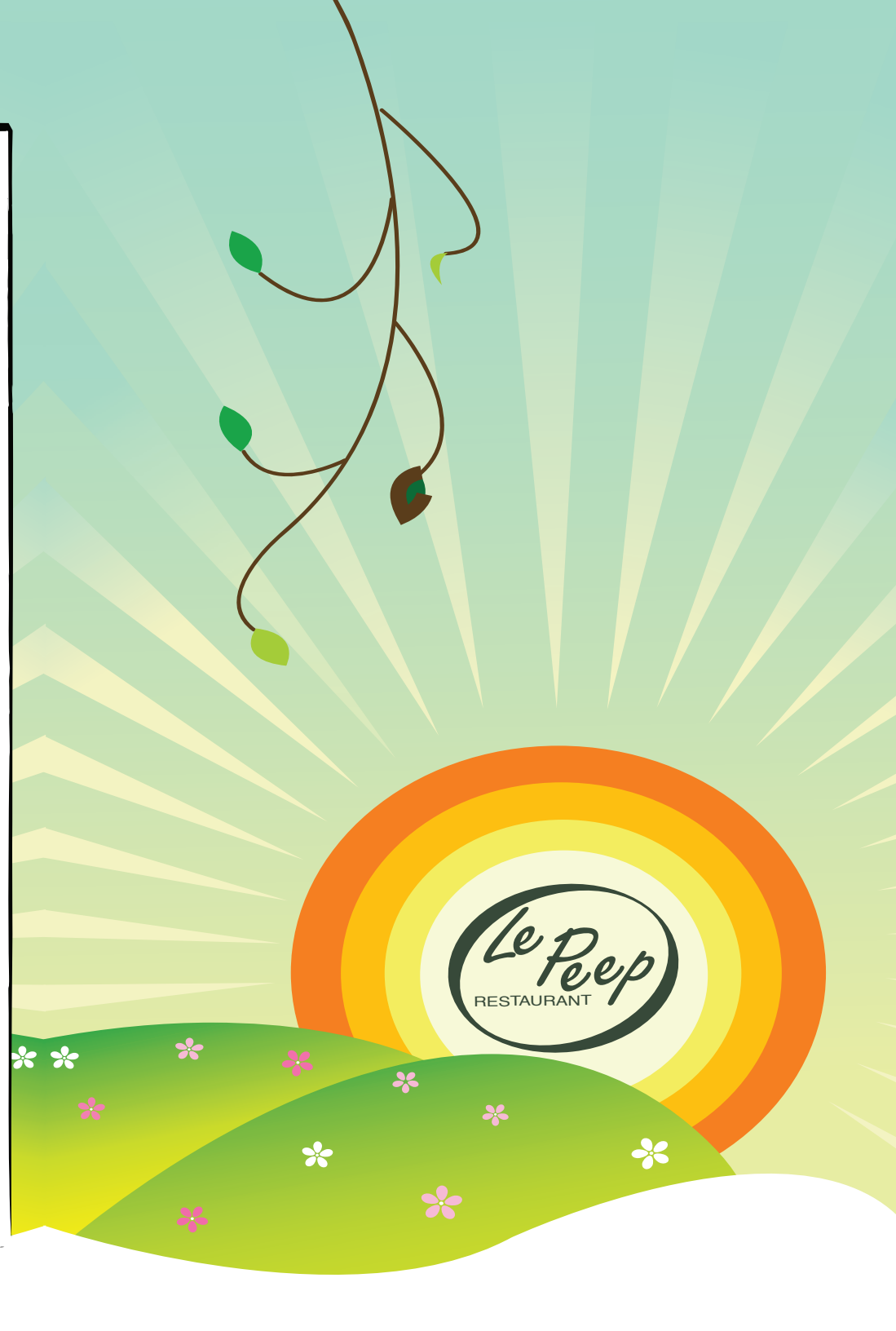


BELGIAN WAFFLE

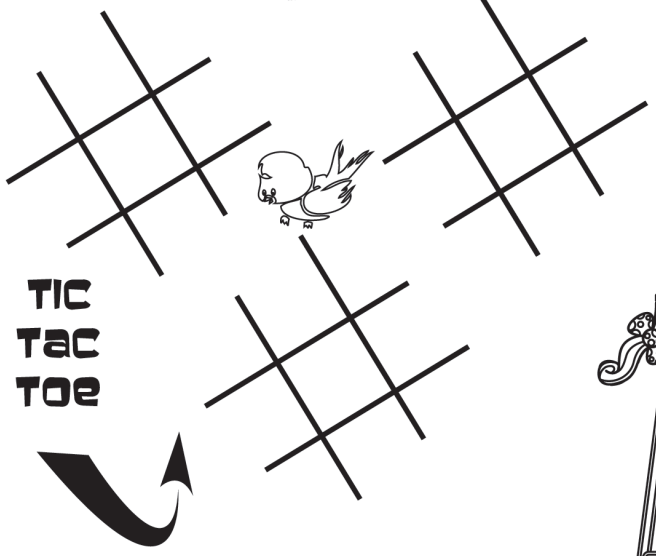
Belgian waffle dusted with powdered sugar. 6.99

BERRIES & CREAM

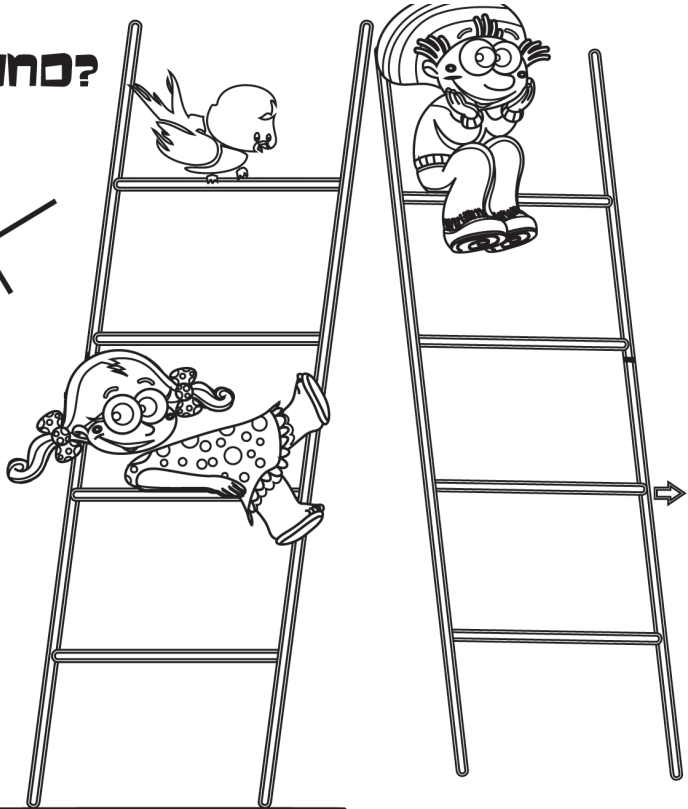
Strawberries and blueberries topped with whipped cream 5.99



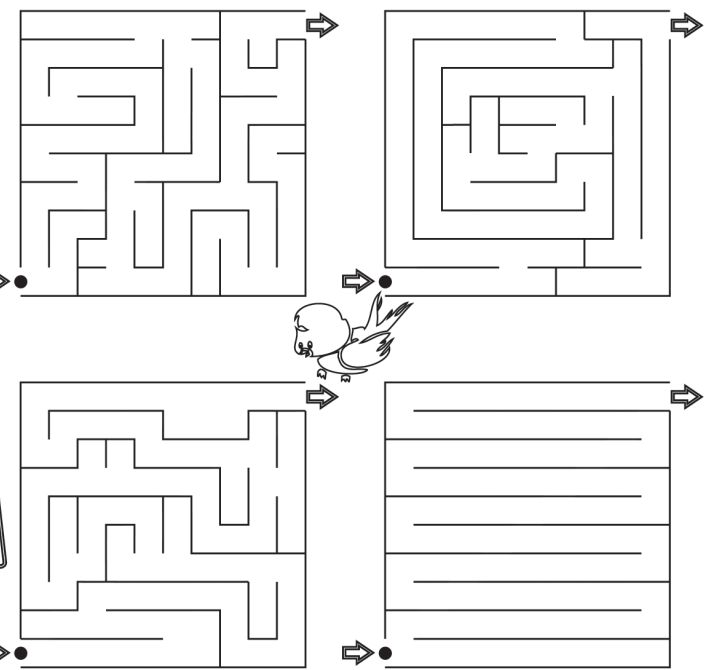
HOW MANY CAN YOU FIND?



TIC
TAC
TOE



WORD SCRAMBLE: NET SEPPE _____



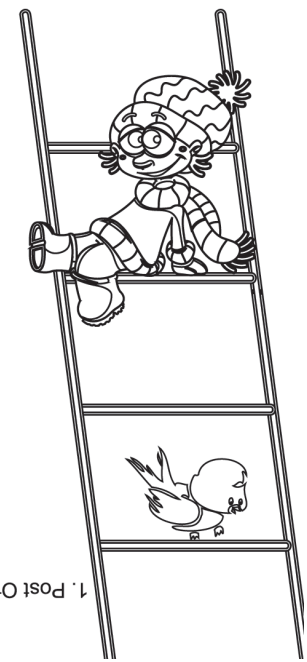
T	O	O	C	M	S	S	M	W	W	E	R	N	F	N	S
D	M	O	O	L	S	T	T	C	E	E	A	G	C	K	H
O	C	Z	S	F	S	J	I	H	W	S	I	W	Q	K	M
S	B	L	G	T	O	D	X	O	E	S	I	C	A	F	D
Y	W	E	B	F	R	M	L	C	E	E	X	L	L	S	Q
U	B	A	G	X	C	F	T	O	A	S	T	S	L	N	I
S	R	V	I	O	S	D	Z	L	P	T	G	S	W	V	A
F	A	E	B	L	S	V	F	A	E	H	S	R	F	I	Z
F	I	S	K	X	I	V	R	T	E	B	F	F	Z	R	A
G	E	R	M	A	R	E	O	E	P	X	S	N	E	H	G
U	L	O	O	H	C	S	H	C	S	G	A	I	I	A	F
L	R	S	G	T	E	N	N	H	N	R	R	N	O	H	J
F	H	A	R	C	S	P	A	I	N	K	R	F	G	J	H
X	T	E	W	O	P	C	R	P	A	S	T	O	S	E	I
P	E	H	O	O	F	P	M	A	G	C	U	N	S	A	S
N	T	R	D	O	S	S	R	E	S	K	A	O	A	T	E

LEAVES	SCHOOL	CHOCOLATE CHIP
SPRING	PEEP	PANCAKE
FLOWER	CRISSCROSS	TOAST



YOLK'S ON YOU

1. What starts with a P and ends with an E and has a million letters in it?
2. What gets bigger and bigger as you take more away from it?
3. "David's father had three sons: Snap, Crackle, and ?"
4. Did you hear the joke about the roof?
5. "If you were in a race and passed the person in 2nd place, what place would you be in?"



1. Post Office! 2. A hole! 3. David! 4. "Never mind, it's over your head!" 5. 2nd place!
Ten Peeps